



fecoplan

Central single-pane glazing as post free all-glass construction

Dimensions: Building-specific unit-width and unit-height, relative wall thickness 35 mm, recommended unit size undivided up to W x H = 1.350 x 3.000 mm

Structure: All-glass structure with aluminium glass fixing profiles on the floor and ceiling, without vertical uprights, glass joints as dry bonding (with passivated front edges), optionally with silicone

Connecting profiles: Aluminium glass retaining profiles with 50 mm facing width, 35 mm depth, three-part support profile with a base profile, clamp jaw and covering profile, one-piece ceiling profile for tolerance absorption, optional three-part, glass inset 18-25 mm as per TRLV (technical regulations for the use of glass panelling with linear support)

Surface: Aluminium retaining profiles natural E6/EV1 anodized, optionally powder-coated in RAL colours

Glazing: Single-pane safety glass 10-12 mm tempered
Laminated safety glass 16-18 mm laminated glass
visible glass edges ground and polished

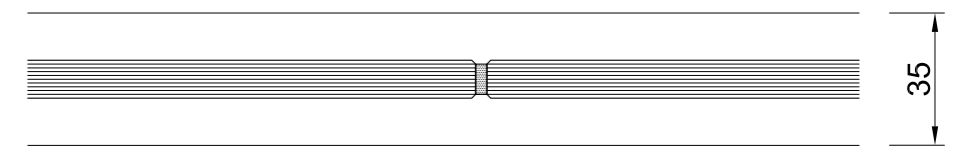
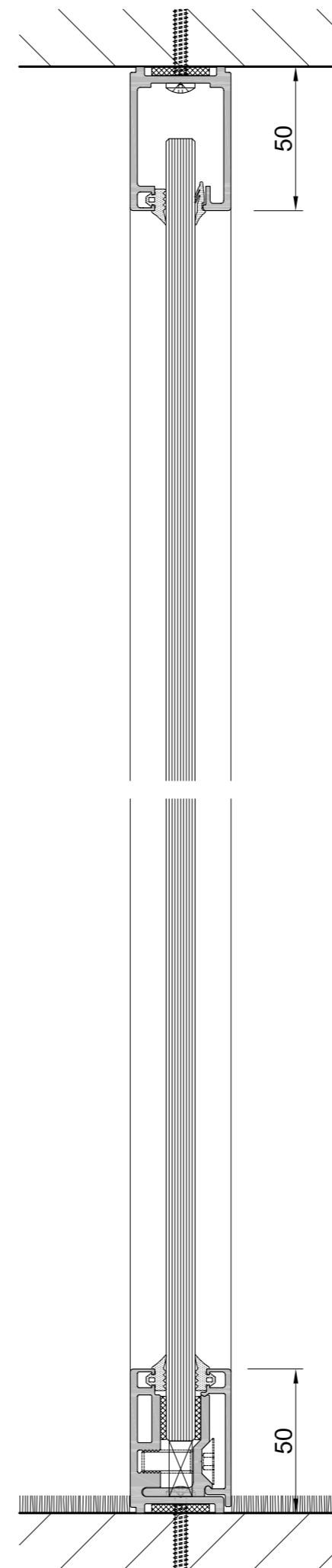
Ceiling connection: Telescopic, absorption of standard tolerances and structural movements up to +/- 15 mm (three-part +/- 5 mm)

Sound insulation:
Sound insulation - tempered glass $R_{w\text{Glass}} = 32-37 \text{ dB}$
Sound insulation - laminated glass $R_{w\text{Glass}} = 37-42 \text{ dB}$

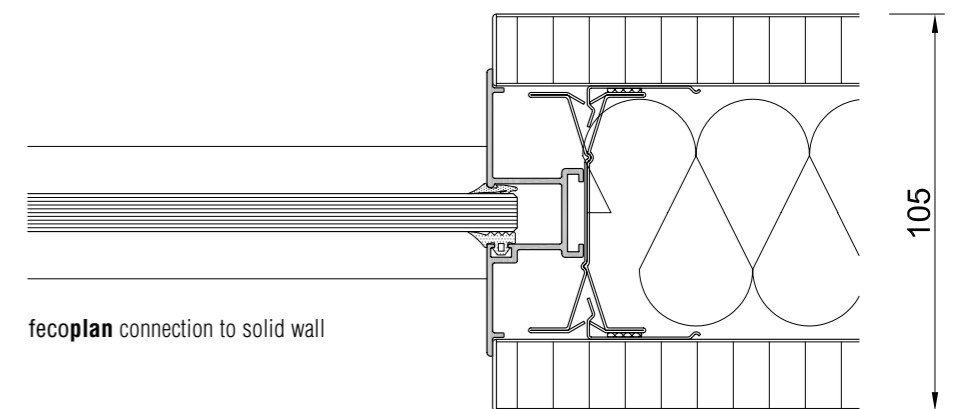
Static certification: According to DIN 4103, Part 1, installation area 1 and 2

Fire resistance: E10 (no requirements)

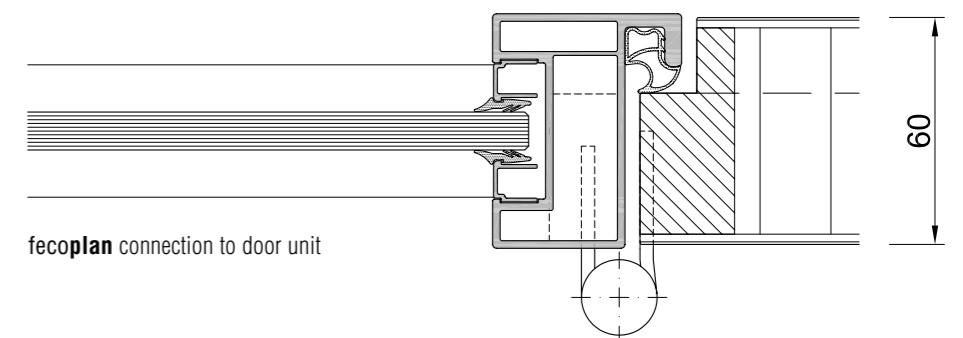
feco[®]
DIE TRENNWAND.



fecoplan horizontal section



fecoplan connection to solid wall



fecoplan connection to door unit