



fecofix

fecofix glazing units are prefabricated in the factory and supplied as fully-glazed units. The factory bonding of cleaned glass panes onto an undivided glass frame ensures cleanliness in the space between the double glazing. Blinds too are integrated in the factory. The glass retaining rails on both sides enable subsequent removal of a glass pane without having to uninstall the glazing unit.

* Glazing which extends down to the floor must, according to Workplace Regulations and Accident Prevention Regulations, be safety glass (single or laminated safety glass). With full glazing it is also recommended that glass marking be included at eye level.

Wall-flush single or double-glazing with 20 mm thin aluminium frame

Dimensions: Building-specific unit-width and unit-height, wall thickness 105 mm, recommended unit size undivided up to W x H = 1.350 x 3.000 mm

Structure: Glass frame made of aluminium profiles, without centre joints, mitred corners connected with 3D clamping angles, facing width of glass frame all around 20 mm

Surface: Glass frame aluminium natural E6/EV1 anodized, optionally powder-coated in RAL colours

Glazing: Single or double glazing consisting of float, tempered, and laminated glass*
 Single glazing 5-8 mm float/tempered/laminated glass
 Double glazing 2 x 5-8 mm float/tempered/laminated glass

Substructure: Galvanized rolled-steel sections, standard uprights with installation openings, optional uprights with slotted rail for integrated vertical organisation

Connecting profiles: Galvanized U-shaped rolled-steel sections as recessed connecting joints, coated in RAL 7016 anthracite, optional in other RAL colours

Frame top: Flush-front aluminium frame in the surface of the glass frame or recessed L-system angle in the surface of the connecting profiles

Floor connection: Telescopic, integrated negative base height approx. 50-100 mm (80 mm standard), with full-glazing, three-part base profile and level adjuster

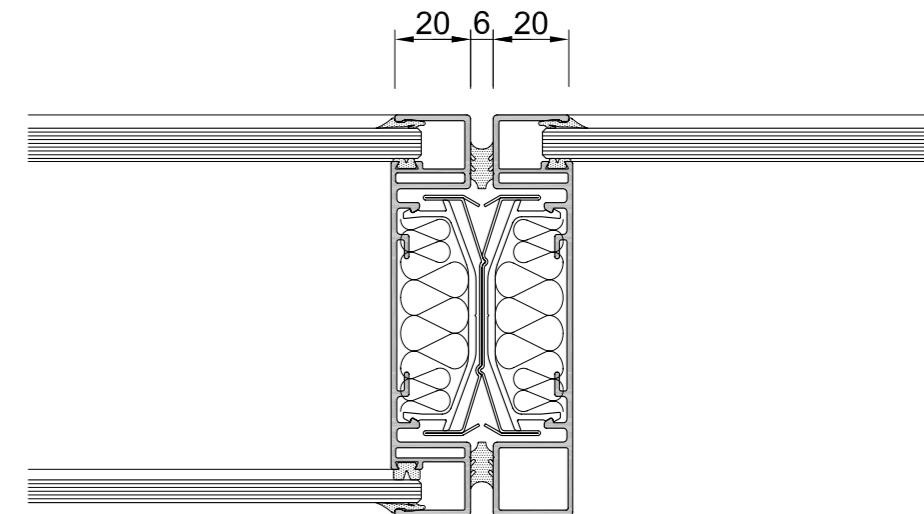
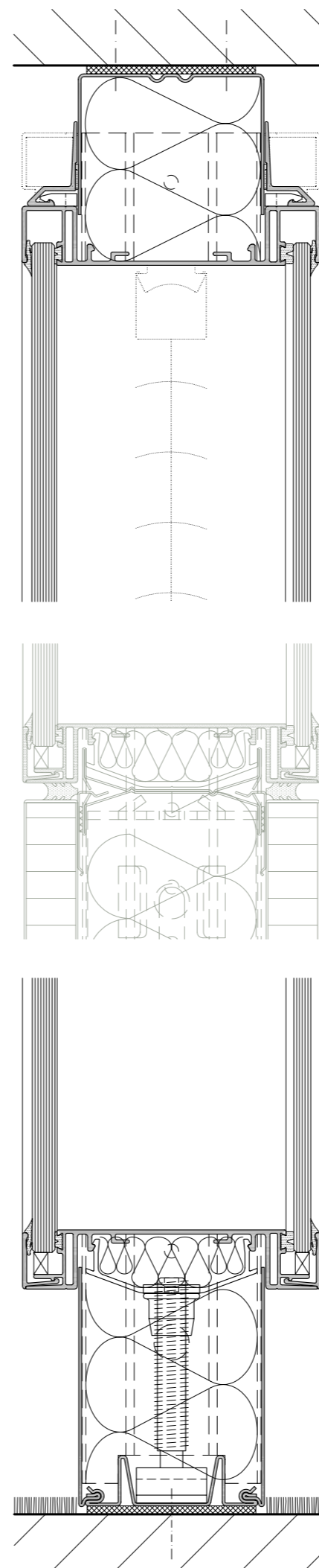
Ceiling connection: Telescopic, shadow joint approx. 20-50 mm, absorption of standard tolerances and structural movements up to +/- 15 mm (without frame top +/- 5 mm), optional higher tolerance absorption

Sound insulation: (see also pages 44-47)
 Sound insulation - single glazing $R_{w,p} = 32/35/37$ dB
 Sound insulation - double glazing $R_{w,p} = 39/43/45/47$ dB

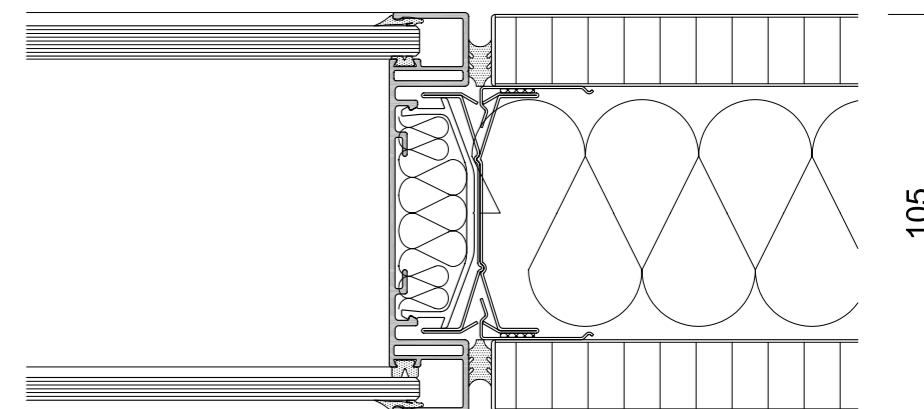
Static certification: According to DIN 4103, Part 1, installation area 1 and 2

Fire resistance: E10 (no requirements)

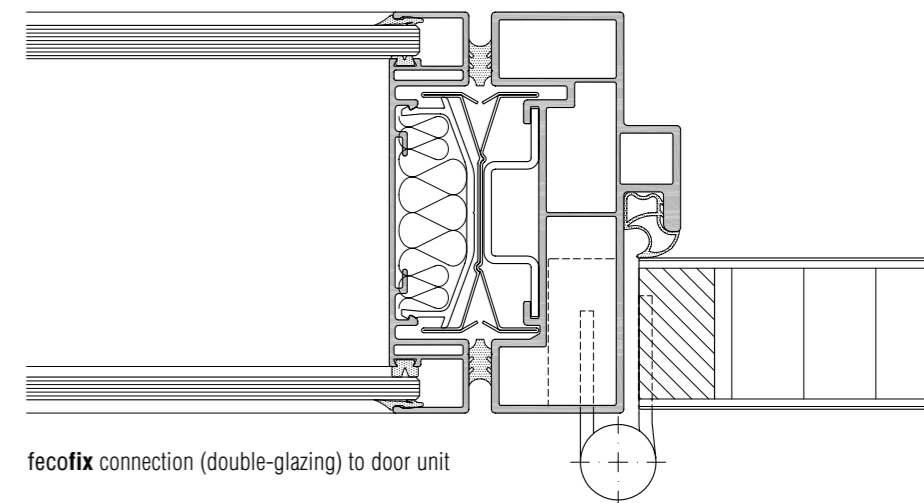
Option - blinds: 25 mm wide horizontal slats, centreline in the space between the panes, manual operation using a rotary knob with reverse function or electric with a lifting, lowering and tilting function, optional with group or remote control



fecofix horizontal section (double on single glazing)



fecofix connection (double glazing) to solid wall



fecofix connection (double-glazing) to door unit