



fecostruct

fecostruct glazing units are prefabricated in the factory and delivered as fully glazed units. The factory bonding of cleaned glass panes on a continuous supporting frame ensures cleanliness in the space between the double glazing panes. Blinds too are integrated in the factory. The two-part base frame allows a glass pane to be removed later without having to uninstall the glazing unit.

* Glazing which extends down to the floor must, according to Workplace Regulations and Accident Prevention Regulations, be safety glass (single or laminated safety glass). With full glazing it is also recommended that glass marking be included at eye level.

Face-flush single- or double-glazing as a frameless structural-glazing

Dimensions: Building-specific unit-width and unit-height, wall thickness 105 mm, recommended unit size undivided up to W x H = 1.350 x 3.000 mm

Structure: Bonding of the glass panes on a two-part base frame made of aluminium profiles, without centre joints, mitred corners connected with 3D clamping angles, width of the gluing 20 mm all around

Bonding: Structural glazing as a self-supporting construction, UV-resistant adhesive with a homogenous surface

Surface: Aluminium frame natural E6/EV1 anodized, bonding surface aluminium colour

Glazing: Single or double glazing out of float, tempered, and laminated glass*. Glass edges ground and polished

Single glazing 6-8 mm float/tempered/laminated glass
Double glazing 2 x 6-8 mm float/tempered/laminated glass

Substructure: Galvanized rolled-steel sections, standard uprights with installation openings, optional uprights with slotted rail for integrated vertical organisation

Connecting profiles: Galvanized U-shaped rolled-steel sections as recessed connecting joints, coated in RAL 7016 anthracite, optional in other RAL colours

Frame top: Recessed L-system angle in the surface of the connecting profiles

Floor connection: Telescopic, integrated negative base, height approx. 50-80 mm, with full-glazing three-part base profile and level adjuster

Ceiling connection: Telescopic, shadow joint approx. 50 mm, absorption of standard tolerances and structural movements up to +/- 15 mm (without frame top +/- 5 mm), optional higher tolerance

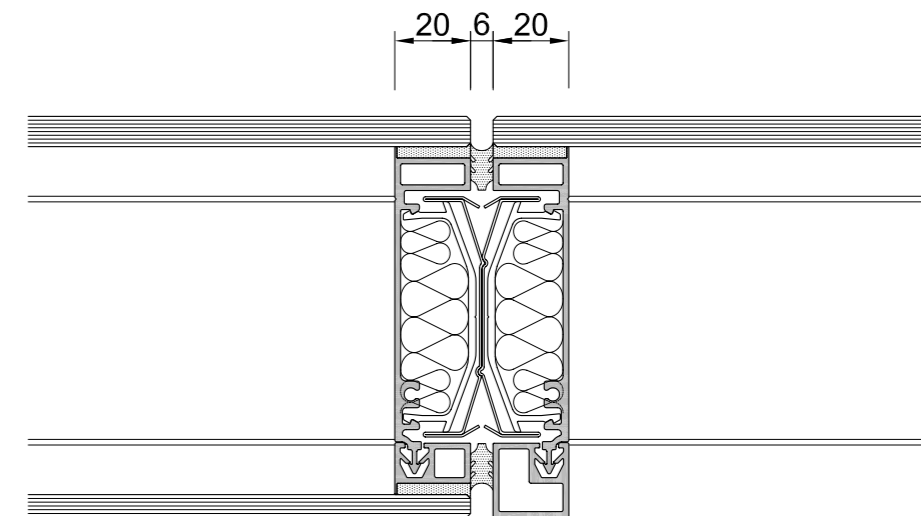
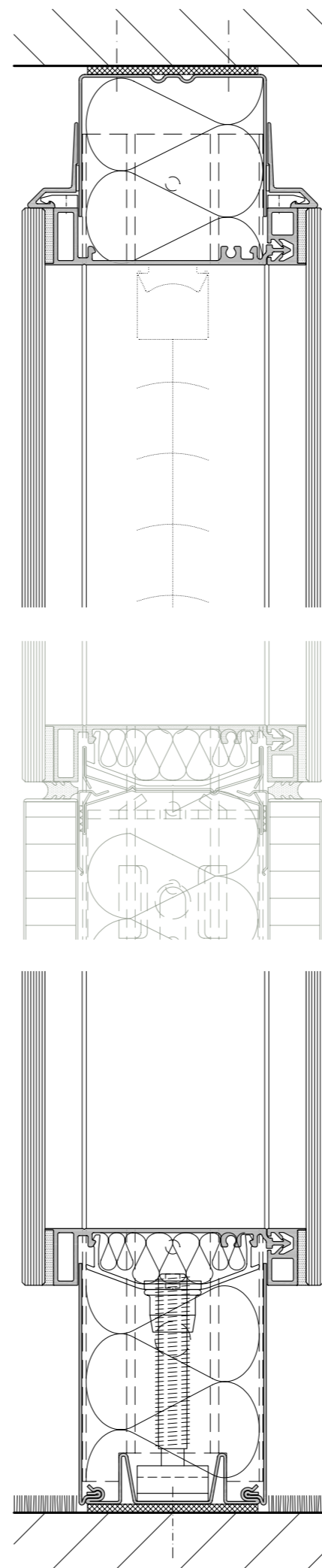
Sound insulation: (see also pages 44-47)

Sound insulation - single glazing $R_{w,p} = 32/35/37$ dB
Sound insulation - double glazing $R_{w,p} = 39/43/47$ dB

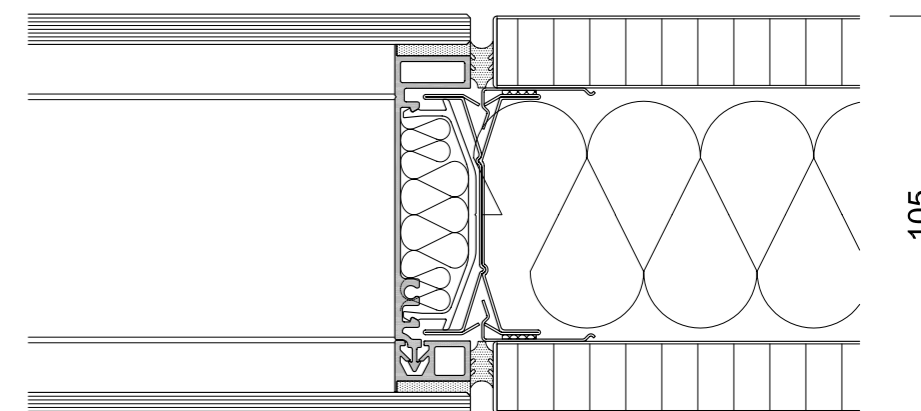
Static certification: According to DIN 4103, Part 1, installation area 1 and 2

Fire resistance: E10 (no requirements)

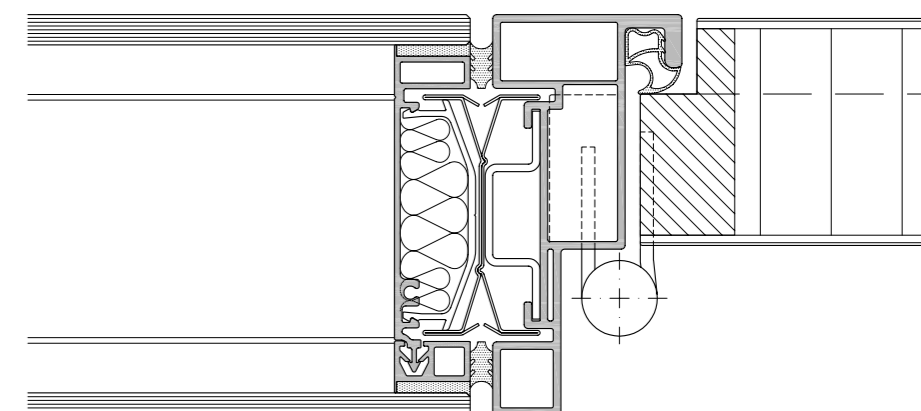
Option - blinds: 25 mm wide horizontal slats, centreline in the space between the panes, manual operation using a rotary knob with reverse function or electric with a lifting, lowering and tilting function, optional with group or remote control



fecostruct horizontal section (double on single glazing)



fecostruct connection (double glazing) to solid wall



fecostruct connection (double glazing) to door unit